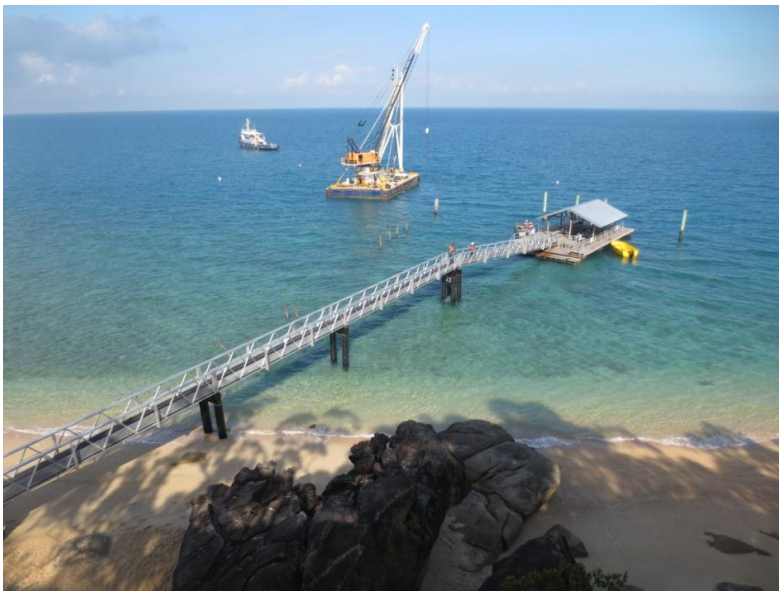


JST International Co., Ltd

GUARDIAN

GUARDIAN Splash System -Zone



Benefits

- **Protects Piles against Corrosion**
- **Providing 20+ Years of Corrosion Protection Performance**
- **For Severe Corrosive Environments**
- **“St2” surface preparation**
- **No Curing Time**
- **No VOC Content**

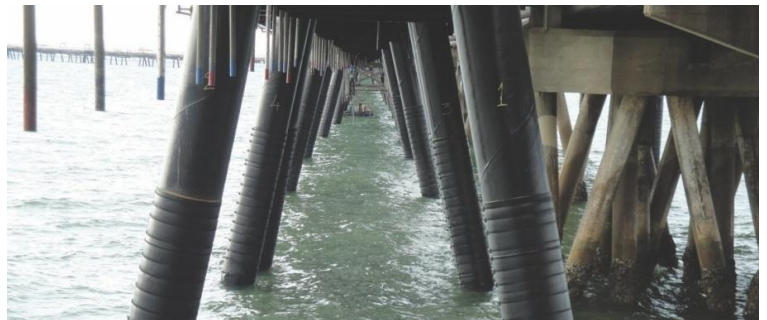
Typical Application

60 System : Protects Piles against Corrosion (Steel, Concrete), and Worm Infestation (Timber), in sheltered or non-exposed water situations (for example, Harbour, Bay or similar).

100 System : Protects Piles where swell/wave height typically is less than 2.5 m.

2000FD System : Protects Piles in open water locations, for example, Exposed Onshore/Offshore.

500 System : Restore and Protect CONCRETE, STEEL and TIMBER Piles



GUARDIAN *Petrolatum* Tape



Benefits

- ***AWWA Standard C217***
- ***Minimal surface preparation ISO 8501-St2***
- ***Uniform Film Thickness***
- ***Ease of use***
- ***Wide Ranging Resistance***
- ***No Curing Time***
- ***No VOC Content***

Typical Application

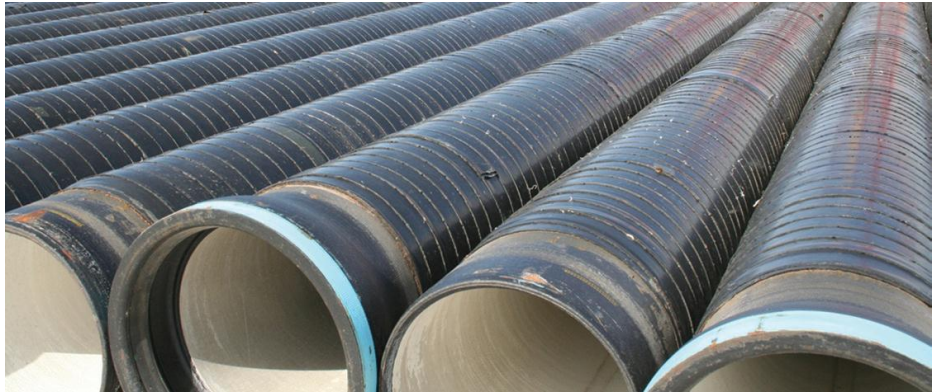
- ***Above and below ground pipework,***
- ***Steelwork***
- ***Sweating pipes and tanks,***
- ***Tie rods***
- ***Duct sealing.***



GUARDIAN Bituwrap

Benefits

- Cold Applied Bitumen/PVC Pipewrap
- *Extruded PVC Carrier engineered for toughness, conformability and controlled elasticity.*
- *Compound formulation designed to give maximum adhesion in a wide variety of application temperatures and includes underwater applications.*
- *Overwidth Silicone Coated Interleaving that for cleaner handling.*



Typical Application

- **Bituwrap 1000** : *Medium to Heavy-Duty corrosion protection tape for use on Above and Below Ground Pipelines, Pipeline Bends, Joints and Fittings and joint sealing of RC Pipes and Concrete Culverts.*
- **Bituwrap 1650**: *Heavy-Duty corrosion protection tape for use on Above and Below Ground Pipelines, Pipeline Bends, Joints and Fittings and joint sealing of RC Pipes and Concrete Culverts.*
- **Bituwrap Road Tape**: *Used in the sealing of Reflective Cracking, in Paving and Roadways, as a Sealing and Waterproofing Membrane on Culverts and Bridge Decking Construction Joints.*